

Westinghouse Huntsville, AL

Engineering and Integration



Welcome to Westinghouse

All Visitors will be required to sign in upon arrival as you are greeted by your Westinghouse representative(s).

Currently Visitors need to report to the rear entrance of the Building by the Receiving Dock and Doorways. There is no Personal Protective Equipment required to enter our facility. Smoking is permitted only in designated outside areas location on the facility property.

All Visitors must complete the automated email from Westinghouse Security prior to your visit, to obtain proper approvals. Upon arrival, please ring the doorbell and wait for a Westinghouse employee to greet you and process your entrance.

Should you identify any safety concerns, please contact your Escort or Host immediately.

Westinghouse **VISION & VALUES**



together

we advance technology
& services to power a
clean, carbon-free future.

Safety is our Priority

1. Please follow these workplace practices while visiting our site:
2. Wear your identification credentials/badge at all times.
3. Remain with your Escort at all times, maintaining visual contact and obey their directions. The exception is when you use the restrooms.
4. Obey Integration Bay walkway paths and do not enter hazardous areas.
5. Visitor Orientation is provided upon arrival along with a Visitor Pamphlet.
6. Drinks are permitted in the Integration Bay when using a closed container.
7. Eating is permitted in the Kitchen, Conference rooms and specific designated work areas that do not contain deliverable work in progress or materials.
8. Emergencies & Injuries must be reported to your Escort/Host immediately.
9. First Aid Kits and AED's are available.





Prohibited Activities

Cameras, Video and Camera Phones – these are not allowed to be used when in the Secure Development Environment (SDE) without permission

Cyber Protected project work areas – Customers & Visitors are expected to remain within their project areas while in the Integration Bay, unless being escorted by Westinghouse staff into these Protected Areas

USB/Removable Media – not allowed for use

Site Accommodations

Conference Rooms

3 are available for project meetings and depending on your stay one may be designated as a Visitor Workroom for your team to meet privately

Training Room

located in the North end of the building with restrooms and a workspace available during all training sessions

Workspace areas in the Integration Bay

we will ensure your team has adequate work space during your visit.

Breakrooms with water and coffee are available

Wi-Fi

If you need Wi-Fi access, please ask your Host/Escort and we will obtain access credentials to the Westinghouse Guest Network



Building Information

Address:

994-A Explorer Boulevard NW, Huntsville, AL 35806

Note: the addresses in the Research Business Park are odd and even on the same side of the street causing some confusion

Business Hours:

Regular business hours are Monday – Friday, 8:00am to 5:30pm

Opening Early and Staying Late can be accommodated based on project schedules

Security Services

Global Security Command Center: (412) 374-5433 securitycommandcenter@westinghouse.com

Global Security email: globalsecurity@westinghouse.com

Directions to the Office

Huntsville Airport to Westinghouse Huntsville Office

- ✓ Turn right onto I-565 East.
- ✓ Take Exit 14 off of I- 565 East to Research Park Blvd (approx. 7 miles).
- ✓ Follow Research Park Blvd $\frac{3}{4}$ miles to Bradford Drive exit (2nd exit).
- ✓ Exit west onto Bradford Drive.
- ✓ Turn right on Explorer Blvd and go through the first traffic light (Discovery Dr.).
- ✓ Turn left at the first entrance after passing the light.
- ✓ Bear left in the parking lot.

From University Drive

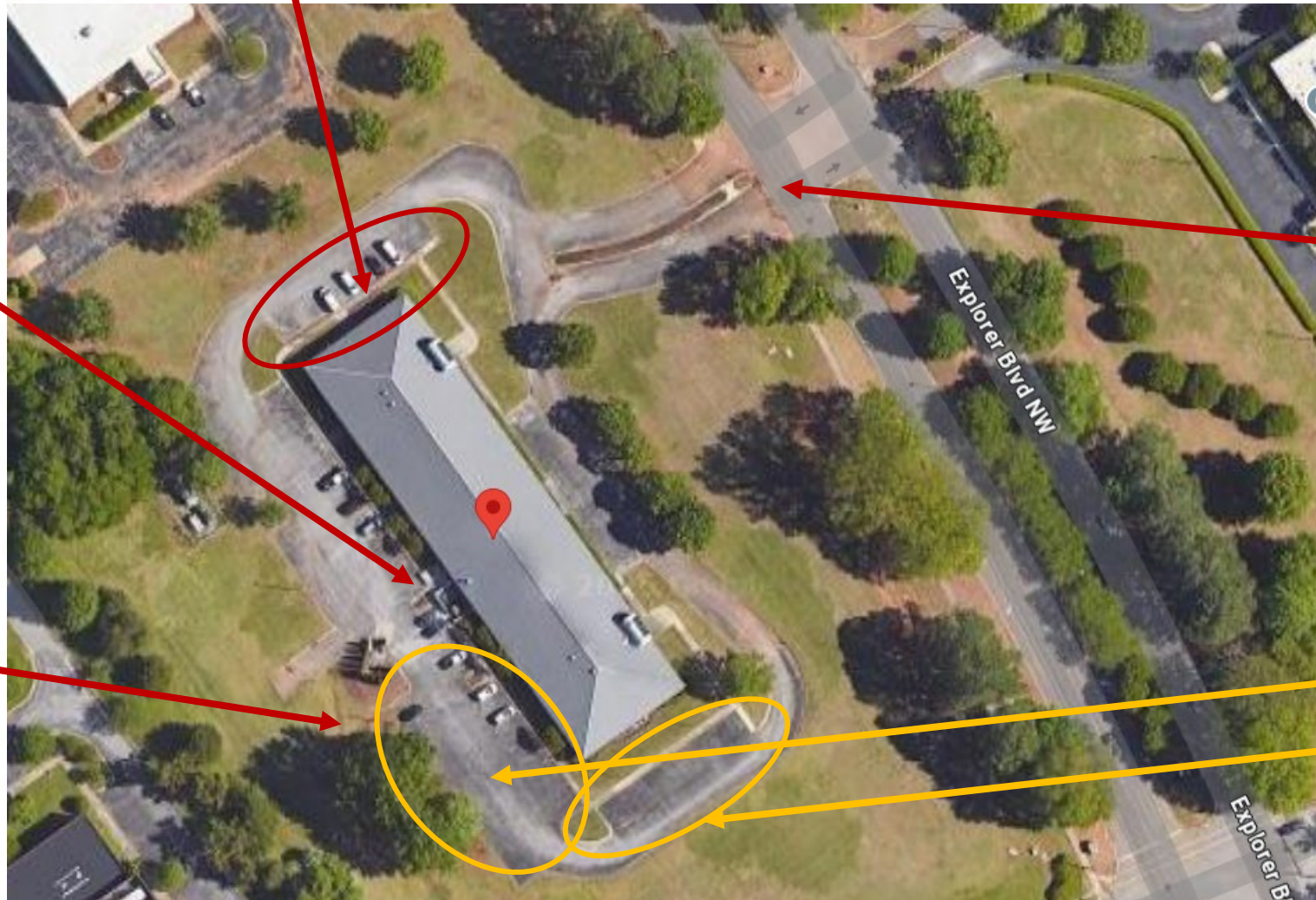
- ✓ From University Drive turn unto Enterprise Way NW heading South
- ✓ Turn Left onto Explorer Blvd NW
- ✓ Turn right into complex, bear left in the parking lot

From Hwy 72

- ✓ Heading west on 72 turns into I-565 West
- ✓ Take exit 14B toward Research Park Blvd onto AL-255 N
- ✓ Exit west onto Bradford Drive. (2nd exit).
- ✓ Turn right on Explorer Blvd and go through the first traffic light (Discovery Dr.).
- ✓ Turn left at the first entrance after passing the light.
- ✓ Bear left in the parking lot.

Building Entry and Parking

Lumen – other building tenant – please do not mark in these spots



Rear Entrance-
Receiving Dock &
Doors

Designated
Smoking Area

Site Entrance from
Explorer Blvd

Visitor Parking –
avoiding
shipments and
semi-trucks

Welcome

Huntsville, Alabama is the fourth-largest city in Alabama, located in the northernmost part of the state. A city with a 200-year Southern heritage, visitors will find activities that celebrate Huntsville's rich history, as well as attractions that highlight the city's scientific side.



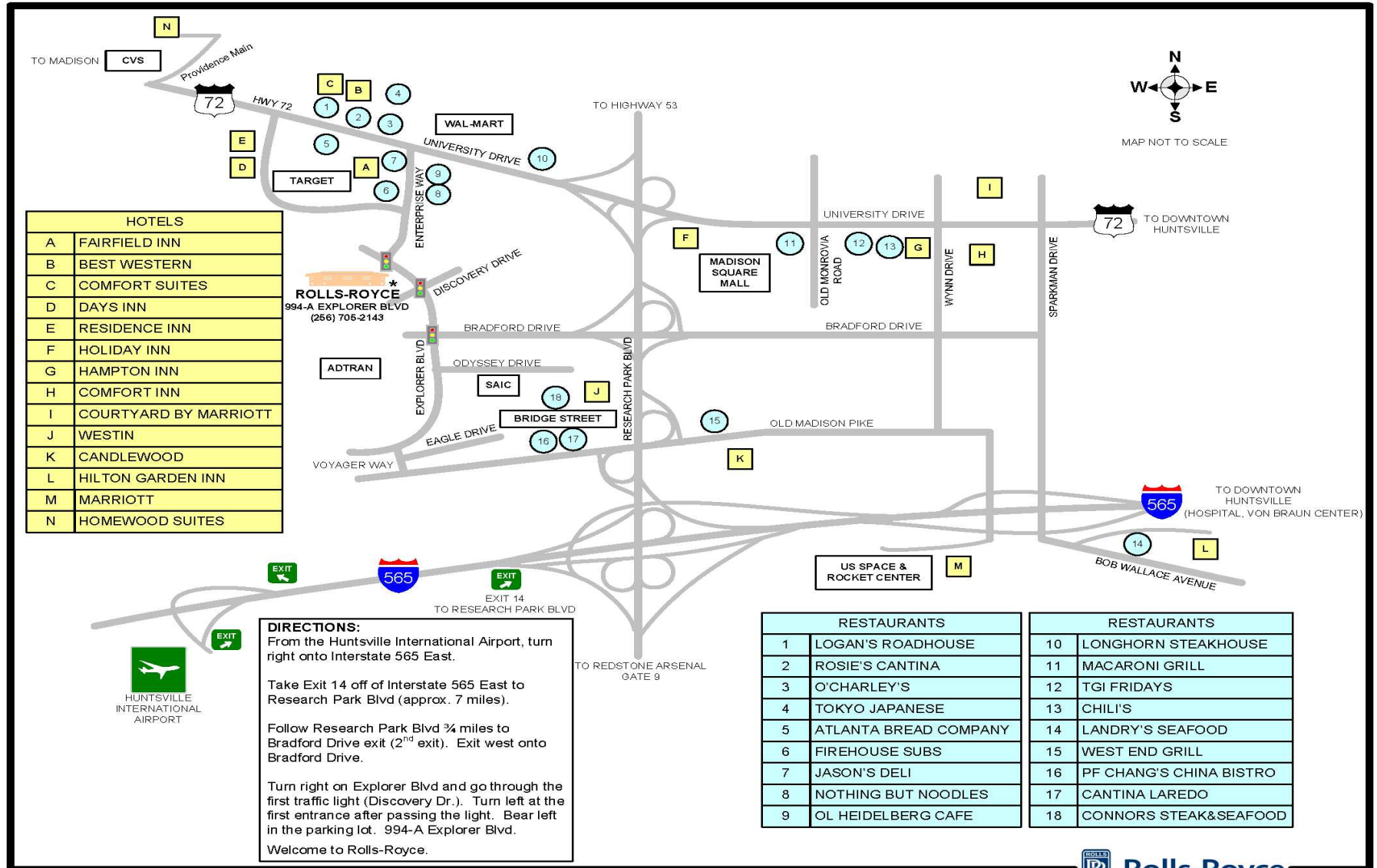
Accommodations Map

Please Note:

Hotels brands/names change.

Hotels in the Providence area (Northwest of the office) are the closest.

Downtown Huntsville has numerous other options along with upscale dining and community attractions and walkways.



Hotels

[Hilton Garden Inn Huntsville/Space Center](#)

4801 Governors House Drive, Huntsville, AL 35805 Phone: (256) 430-1778

[Homewood Suites by Hilton Huntsville-Village of Providence](#)

15 Town Center Drive, Huntsville, AL, 35806 Phone: (256) 895-9511

[Westin](#)

6800 Governors West, NW Huntsville, Alabama 35806 Phone: (256) 428-2000

[Fairfield](#)

1385 Enterprise Way NW, Huntsville, AL, 35806, Phone: 1-866-460-7456

[Embassy Suites Hotel & Spa Downtown](#)

800 Monroe Street, Huntsville, AL 35801 Phone: (256) 539-7373 Tollfree: 800-362-2779

[Holiday Inn Express](#)

2600 Old Fairway Road, Huntsville, AL 35806 Phone: (256) 837-7171

[Home2 Suites by Hilton - Huntsville/Research Park](#)

7010 Governors West Drive, Huntsville, AL 35806 Phone: (256) 971-1850

[Springhill Suites - Village of Providence](#)

320 Providence Main Street, Huntsville, AL 35806 Phone: (256) 430-1485 Tollfree: (888) 236-2427

<http://www.huntsville.org>

Home Grown Favorites

[1892 East](#) Downtown ,720 Pratt Avenue, Huntsville, AL 35801, Phone: (256) 489-1242

[Lil Libby's](#), 234 Lime Quarry Road Madison, AL 35758 Phone: (256) 772-0191

[Rosie's Mexican Cantina](#), Mexican & Southwestern, 6196 University Drive, Huntsville, AL 35816, Phone: (256) 922-1001

[Old Greenbrier Restaurant](#), 27028 Old Hwy 20, Madison, AL 35756, Phone: (256) 351-1800

[Terranova's](#) Italian Restaurant , 1420-A Paramount Drive, Suite 1, Huntsville, AL 35806 Phone: (256) 489-8883

[Tim's Cajun Kitchen](#) 114 Jordan Lane Huntsville, AL 35805 Phone: (256) 533-758

[Ol' Heidelberg Restaurant](#) 6125 University Drive, #E 14 Huntsville, AL 35806 Phone: (256) 922-0556

Other Favorites

[Cantina Laredo](#) 300 The Bridge Street, Huntsville, (256) 327-8580

[Connors steak & Seafood](#), 345 The Bridge Street, Suite 10, (256) 327-8425

[P.F. Chang's](#) 305 The Bridge Street, Suite 101 Phone (256) 327-8320

There are plenty of restaurants near the office like; Chilies, Applebee's, Atlanta Bread Company, Jason's Deli, , Five Guys, ...and many more.

While Visiting – Things to Do

[Huntsville Botanical Garden](#)

4747 Bob Wallace Avenue Huntsville, AL 35805 Phone: 256-830-4447

[U.S. Space & Rocket Center](#)

One Tranquility Base Huntsville, AL 35801 Phone: (256) 837-3400
Tollfree: (800) 637-7223

[Golf](#)

Top Golf – 6100 Topgolf Drive NW, Huntsville, AL 35806 (256) 270-4667

[Calendar Of Events](#)

Shopping

[Bridge Street Town Centre Shopping](#)

365 The Bridge Street, Suite 106, Huntsville, AL 35806, 256-327-8400

[Madison Square Mall](#)

5901 University Drive Huntsville, AL 35806 Phone: 256-830-5407

[Parkway Place Mall](#)

2801 Memorial Parkway Huntsville, AL 35801 Phone: 256-533-0700

Sports

[Huntsville Havoc – Hockey Team](#)

[Rocket City Trash Pandas – Baseball Minor League](#)

[Huntsville City Football Club - Soccer](#)

<http://www.huntsville.org/> a wonderful site to investigate for many fun activities in the Area