

Welcome



PWROG Reactivity Management Working Group



Welcome!

Welcome to the PWROG Reactivity Management Working Group (RMWG)! The PWR Owners Group (PWROG) consists of 1,800 members representing utilities that own a combined 180 Pressurized Water Reactor-designed nuclear power plants all over the world.

You are joining a friendly group of utility representatives where you'll help drive resolution to generic industry issues.

You will find that the PWROG members are very welcoming to new members. We really want to help you be comfortable and successful in your new role.

Please contact me or Chad Holderbaum sometime early in your new role for a high-level briefing of current activities and an overview of your responsibilities if you feel it would be beneficial.

Thanks,
Norm

Norm Austin, Southern Nuclear Company

Chairman of the PWROG Reactivity Management Working Group

Inside

1. [Website Access and the PWROG Website](#)
2. [About the Committee, Benefits & Roles & Responsibilities](#)
3. [Getting Started Frequently Asked Questions](#)



Website Access

There are four steps to gain access :

1. Complete the Website Profile-SharePoint Request form by [clicking here](#).
2. Respond to the email from Carolyn Mahnick requesting you create your PWROG profile.
3. Respond to the email from "WEC HR SSC" (Subject: PHX Connect – Account Details) to submit information online to Phoenix Connect for Export Control compliance.
4. Follow further instructions provided in the Microsoft invite from invites@microsoft.com.

Problems?

If having general problems, open a ticket [here](#). If you are having website access issues, email Carolyn Mahnick.

PWROG Website

www.pwrog.com

What you will find on the website:

- Project Authorizations
- Products / Deliverables
- Meeting materials and meeting archives
- PWROG Administrative Documents
- PWROG Training ([click link](#))



About the PWROG & RM Working Group

PWROG Benefits

The PWROG provides a common solutions with costs shared globally among members with a minimum return on investment of 30:1. The PWROG supports member activities through superior regulatory interface and can respond rapidly to plant critical needs.

The PWROG is an international organization, which provides a global perspective to all solutions and collaborates with other industry organizations to leverage a wide variety of expertise.

Mission & Vision of the Working Group

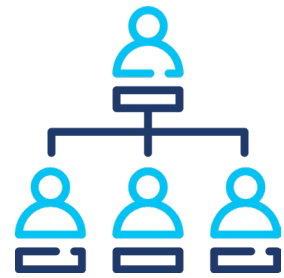
The **Mission** of the RMWG is to champion excellence in the PWR industry for Reactivity Management programs to improve nuclear safety, maintain operational focus and optimize plant performance

The **Vision** of the RMWG is to implement and execute aligned industry best practices, standards and share OE to reduce events and improve nuclear safety through Reactivity Management

Member Roles & Responsibilities

- Familiarize yourself with all meeting topics and issues and come prepared to participate in discussions
- Establish technical work to be performed
- Review Project Authorizations (PAs) and provide an endorsement vote on projects
- Obtain input from Procedures, Executive and/or Management Representatives on voting direction for PAs
- Monitor the technical performance of projects and approve schedule or scope changes
- Share best practices and lessons learned
- Keep your Management and utility representatives informed of working group activities

Organization Structure of the PWROG



[PWROG Org Chart](#)

[Program Management Office](#)

Computer Based Training

Visit [PWROG Training](#) to begin computer-based training assignments.

If you are still having issues, please contact Carolyn Mahnick, mahnicc@westinghouse.com.

PWROG Key Contacts

Jim Lynde, Chairman & COO

- James.lynde@constellation.com

Dewey Olinski, Executive Director

- olinskdc@westinghouse.com

Tom Laubham, Program Director

- laubhati@westinghouse.com

Working Group Key Contacts

Norm Austin, Chairman

- aaaustin@southernco.com

Chris Ehmke, Vice Chairman

- cehmke@ameren.com

Rob Dautel, Vice Chairman

- Robert.Dautel@constellation.com

Chad Holderbaum, Program Director

- holdercm@westinghouse.com



Frequently Asked Getting Started Questions



I have a generic issue at my plant or an idea for a PWROG project. How do I engage the PWROG to potentially address my issue or idea?

A. There are multiple ways to get your issue or idea heard! The easiest way is to discuss your issue or idea at the next committee or working group meeting or contact your Chairman or Program Director.

When are the meetings?

A. The [meeting schedules](#) are available on the home page of the PWROG website.

How do I learn more about how things work?

A. Attending the meetings and participating on issue specific Core Teams is the best way to learn more about the PWROG. The website also contains [computer based training](#), and governing documents such as the [PWROG Charter and Operations Manual](#).

How do I Find Specific Information on the Website?

A. All Committees and Working Groups have [pages](#) which can be accessed by the Committee Information drop down on the home page header. Here you'll find meeting materials, letters issued to the committee or working group and project information.

Do you still need help?

A. [Open a ticket](#) or contact your Committee or Working Group Program Director or Chairman.

