

# Welcome

PWROG Materials Committee



## Welcome!

Welcome to the PWROG Materials Committee (**MSC**)! The PWR Owners Group (PWROG) consists of 1,800 members representing utilities that own a combined 180 Pressurized Water Reactor-designed nuclear power plants all over the world.

You are joining a friendly group of utility representatives where you'll help drive resolution to generic industry issues.

You will find that the PWROG members are very welcoming to new members. We really want to help you be comfortable and successful in your new role.

Please contact me or Jim Molkenthin sometime early in your new role for a high-level briefing of current activities and an overview of your responsibilities if you feel it would be beneficial.

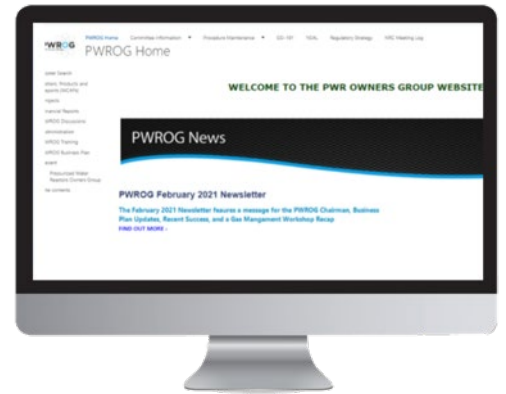
Thanks,  
Corey

**Corey Thomas, Southern Nuclear**

Chairman of the PWR Owner's Group Materials Committee

## Inside

1. [Website Access and the PWROG Website](#)
2. [About the Committee, Benefits & Roles & Responsibilities](#)
3. [Getting Started Frequently Asked Questions](#)



## Website Access

There are four steps to gain access :

1. Complete the Website Profile-SharePoint Request form by [clicking here](#).
2. Respond to the email from Carolyn Mahnick requesting you create your PWROG profile.
3. Respond to the email from "WEC HR SSC" (Subject: PHX Connect – Account Details) to submit information online to Phoenix Connect for Export Control compliance.
4. Follow further instructions provided in the Microsoft invite from [invites@microsoft.com](mailto:invites@microsoft.com).

### Problems?

If having general problems, open a ticket [here](#). If you are having website access issues, email Carolyn Mahnick.

## PWROG Website

[www.pwrog.com](http://www.pwrog.com)

What you will find on the website:

- Project Authorizations
- Products / Deliverables
- Meeting materials and meeting archives
- PWROG Administrative Documents
- PWROG Training ([click link](#))



## About the PWROG & Materials Committee

### PWROG Benefits

The PWROG provides a common solutions with costs shared globally among members with a minimum return on investment of 30:1. The PWROG supports member activities through superior regulatory interface and can respond rapidly to plant critical needs.

The PWROG is an international organization, which provides a global perspective to all solutions and collaborates with other industry organizations to leverage a wide variety of expertise.

### Mission & Vision of the Committee

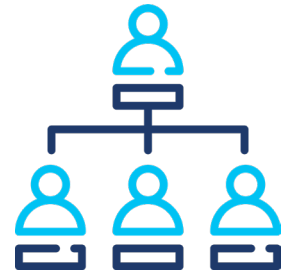
The **Mission** of the MSC is to provide a forum for the identification, resolution, and prevention of materials issues to improve the safe and efficient operation of PWR plants consistent with the objectives of NEI 03-08.

The **Vision** of the MSC is to be a valued PWR materials leadership group that collaborates internally and with other industry issues programs to support ongoing plant maintenance, repair and mitigation needs, and the long-term operation of the PWR fleet.

### Member Roles & Responsibilities

- Familiarize yourself with all meeting topics and issues and come prepared to participate in discussions
- Establish technical work to be performed
- Review Project Authorizations (PAs) and provide an approval or endorsement vote on projects
- Obtain input from Executive and/or Management Representatives on voting direction for PAs
- Monitor the technical performance of projects and approve schedule or scope changes
- Share best practices and lessons learned
- Keep your Management representative informed of activities

## Organization Structure of the PWROG



[PWROG Org Chart](#)

[Program Management Office](#)

## Computer Based Training

Visit [PWROG Training](#) to begin computer-based training assignments.

If you are still having issues, please contact Carolyn Mahnick, [mahnicc@westinghouse.com](mailto:mahnicc@westinghouse.com).

## PWROG Key Contacts

**Jim Lynde, Chairman & COO**

- [james.lynde@constellation.com](mailto:james.lynde@constellation.com)

**Drew Richards, Vice Chairman**

- [amrichards@stpegs.com](mailto:amrichards@stpegs.com)

**Dewey Olinski, Executive Director**

- [olinskdc@westinghouse.com](mailto:olinskdc@westinghouse.com)

**Tom Laubham, Program Director**

- [laubhatj@westinghouse.com](mailto:laubhatj@westinghouse.com)

## Committee Key Contacts

**Corey Thomas, Chairman**

- [brcthoma@southernco.com](mailto:brcthoma@southernco.com)

**Jim Molkenhain, Program Director**

- [molkenjp@westinghouse.com](mailto:molkenjp@westinghouse.com)

## Frequently Asked Getting Started Questions



**I have a generic issue at my plant or an idea for a PWROG project. How do I engage the PWROG to potentially address my issue or idea?**

**A.** There are multiple ways to get your issue or idea heard! The easiest way is to discuss your issue or idea at the next committee or working group meeting or contact your Chairman or Program Director.

**When are the meetings?**

**A.** The [meeting schedules](#) are available on the home page of the PWROG website.

**How do I learn more about how things work?**

**A.** Attending the meetings and participating on issue specific Core Teams is the best way to learn more about the PWROG. The website also contains [computer based training](#), and governing documents such as the [PWROG Charter and Operations Manual](#).

**How do I Find Specific Information on the Website?**

**A.** All Committees and Working Groups have [pages](#) which can be accessed by the Committee Information drop down on the home page header. Here you'll find meeting materials, letters issued to the committee or working group and project information.

**Do you still need help?**

**A.** [Open a ticket](#) or contact your Committee or Working Group Program Director or Chairman.

