

COVID-19 Response

Face masks are required on NPS-administered lands where physical distancing cannot be maintained and in all NPS buildings and facilities. Park operations vary based on local public health conditions. Before visiting, please check the [park website](#) to determine its operating status. Additional details are available at www.nps.gov/coronavirus. Please [recreate responsibly](#).

National Park Service

MENU



Congaree

National Park
South Carolina

INFO

5

MAPS

CALENDAR

RESERVE

ALERTS IN EFFECT

DISMISS

PARK CLOSURES

Phased reopening – some locations closed due to COVID-19

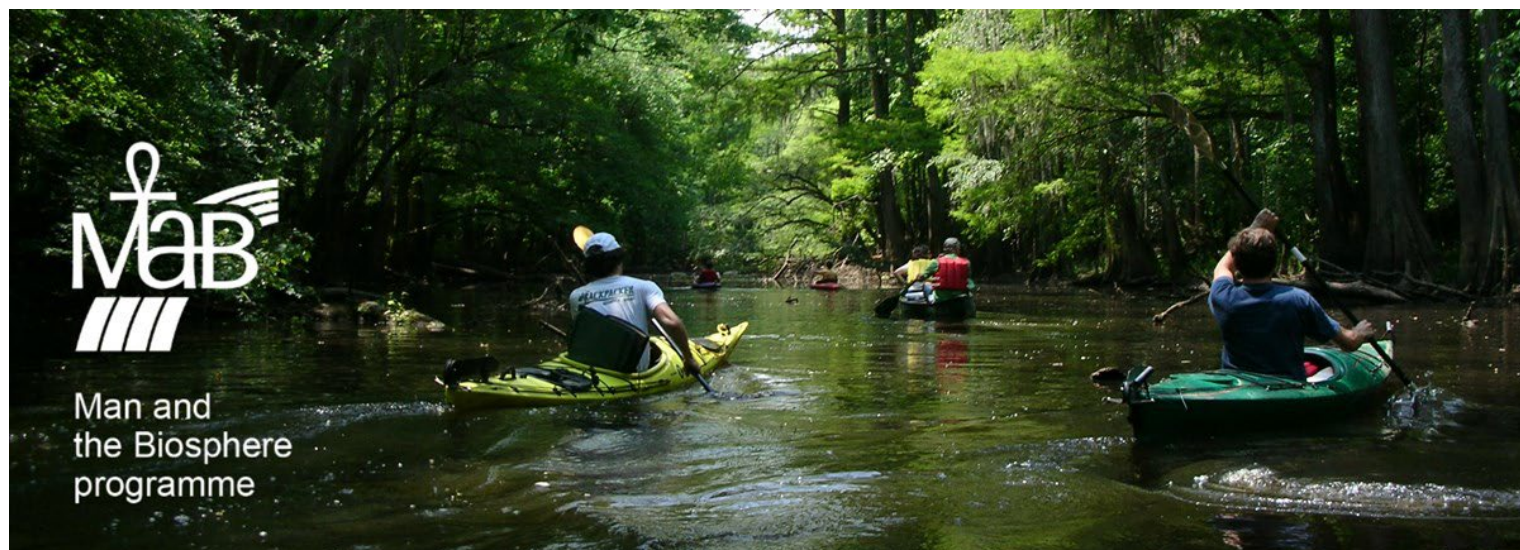
We are working to increase access to the park in a phased approach. Some sites at the Longleaf Campground & portions of the Visitor Center remain closed. All hiking & paddling trails, canoe launches, restrooms & the picnic shelter remain open.

[4 more non-emergency alert notifications...](#)

Dismiss

[View all alerts](#)

Congaree Biosphere Reserve



Man and
the Biosphere
programme

NPS

Congaree National Park is part of the internationally-recognized Congaree Biosphere Reserve.

Biosphere Reserves are designated by the Man and the Biosphere (MAB) Programme of the United Nations Educational, Scientific, and Cultural Organization (UNESCO). Located around the globe, these sites recognize and protect areas of exceptional biodiversity, natural resources, and cultural heritage. Biosphere Reserves are changing landscapes that include not only protected areas like Congaree National Park, but also the surrounding communities. Thus, Biosphere Reserves also promote environmental education, research, tourism, and sustainable development by involving local communities in regional decision making.

Learn more about Biosphere Reserves [around the world](#).

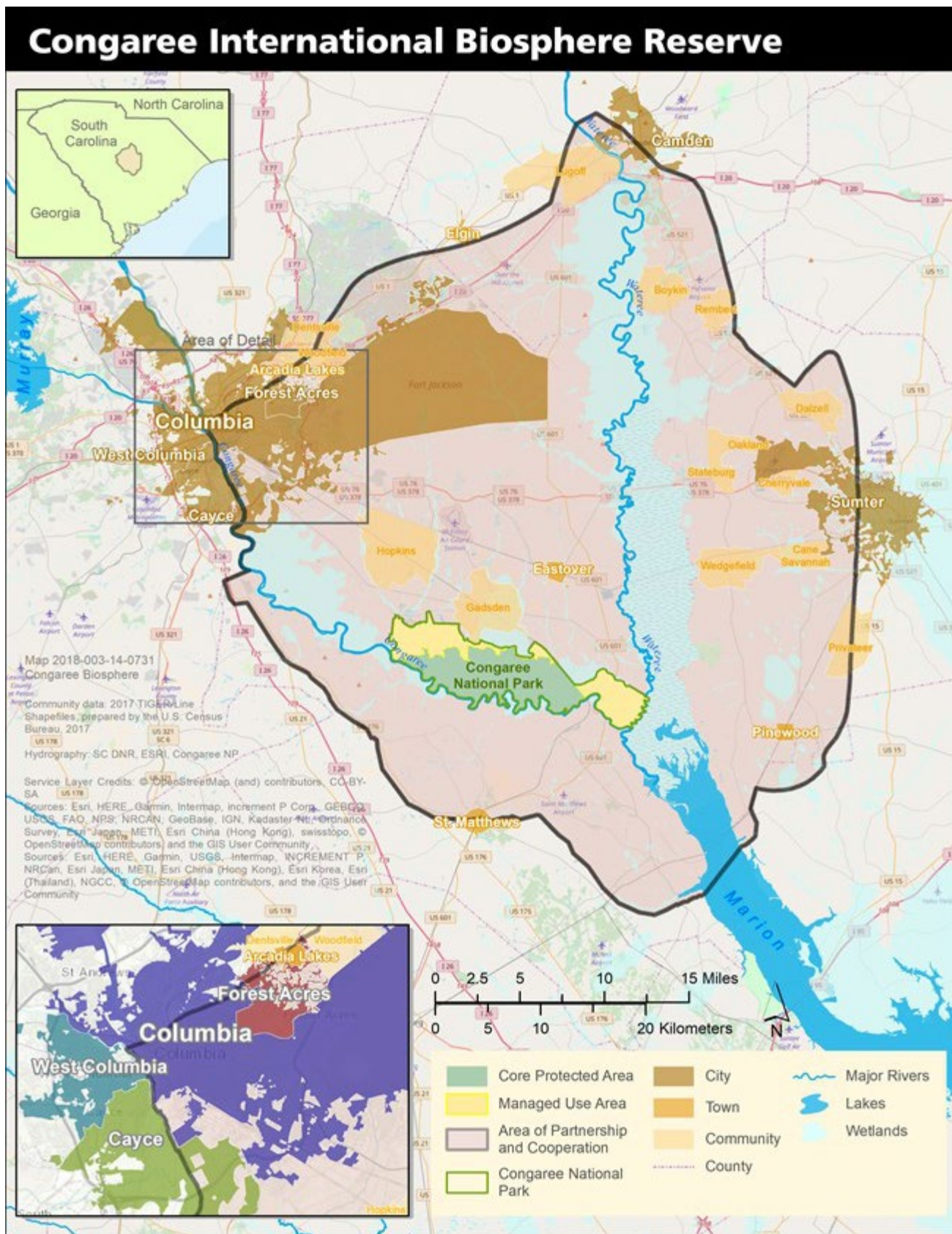
Congaree Biosphere Reserve

Congaree National Park is proud to be part of the Congaree International Biosphere Reserve. First designated by UNESCO in 1983, the Congaree Biosphere Reserve honors and protects the unique ecosystems of the South Carolinian midlands around the Congaree River. The Congaree Biosphere Reserve also recognizes that the people of this area have long-standing, significant relationships with the landscape, including the resources and heritage it contains. The Congaree Biosphere Reserve offers a geographic context for organizations and individuals with diverse missions and perspectives to partner and collaborate for the sustainable use and future of the region.

Geography

of the
Congaree
Biosphere
Reserve

Biosphere Reserves consist of three geographic zones. In the Congaree Biosphere Reserve, these zones are called the Core Protected Area, the Managed Use Area, and the Area of Partnership and Cooperation.



Map of the Congaree Biosphere Reserve, (NPS 2018)

Cooperation.

The **Core Protected Area** includes 15,269 acres of Congaree National Park, all of which are federally designated

wilderness. This area is an important sanctuary for clean air and water, as well as for the thousands of species who live there. It is also a recreational space in which visitors can fish, camp, hike, and boat.

The **Managed Use Area** contains 5,557 acres of wilderness and 5,713 acres of non-wilderness. The Managed Use Area is where Congaree National Park's trails, visitor center, and facilities are located. This area is well suited for educational programs, as it facilitates interaction between people and nature.

The **Area of Partnership and Cooperation** is where people work together to conserve and use resources. This area surrounds the Park, and contains large portions of Calhoun, Kershaw, Richland, and Sumter counties. Rural communities, military facilities, croplands, timber lots, and city blocks are some of the human features found here.

Last updated: July 31, 2018

CONTACT THE PARK ›

Mailing Address:

100 National Park Road
Hopkins, SC 29061

Phone:

(803) 776-4396

Contact Us ›

TOOLS

- [FAQ](#)
- [Site Index](#)
- [Español](#)

EXPERIENCE YOUR AMERICA™

[ACCESSIBILITY](#) | [PRIVACY POLICY](#) | [FOIA](#) | [NOTICES](#) | [DISCLAIMER](#)
[FAQ](#) | [NO FEAR ACT](#) | [CONTACT US](#) | [USA.GOV](#)

[FACEBOOK](#) [FACEBOOK](#) [FACEBOOK](#) [YOUTUBE](#) [YOUTUBE](#) [YOUTUBE](#)

[TWITTER](#) [TWITTER](#) [TWITTER](#) [INSTAGRAM](#) [INSTAGRAM](#) [INSTAGRAM](#)

[FLICKR](#) [FLICKR](#) [FLICKR](#) [ITUNES](#) [ITUNES](#) [ITUNES](#)

National Park Service
U.S. Department of the Interior

Nation
Park